



PROFILE OF STIMEX ENGINEERS

■ FORMATION

The company was started in 1950 under the name WANKHEDE BROTHERS for Repairing / Welding of engineering goods. We were Pioneer to introduce Arc / Gas Welding in Central India. In 1975 we started making Industrial Boilers and H.P. Valves conforming to I.B.R. We were the first industry making I.B.R. Boilers in Central India. In the year 1978, we started making I.B.R. Bends & Tube assembly for B.H.E.L, Trichy for 500 M.W. Boilers. In 1988, it was renamed as STIMEX FABRICATORS & ENGINEERS Pvt. Ltd. and started In Situ Machining of Turbine Components through B.H.E.L. In 1995 it was renamed as STIMEX ENGINEERS.

■ NAME OF PARTNERS

Mr. Ashok Wankhede

Mr. Nitesh Wankhede



■ Location

The Manufacturing unit
lot No.5-6, Sector III Pithampur, Dist (Dhar).

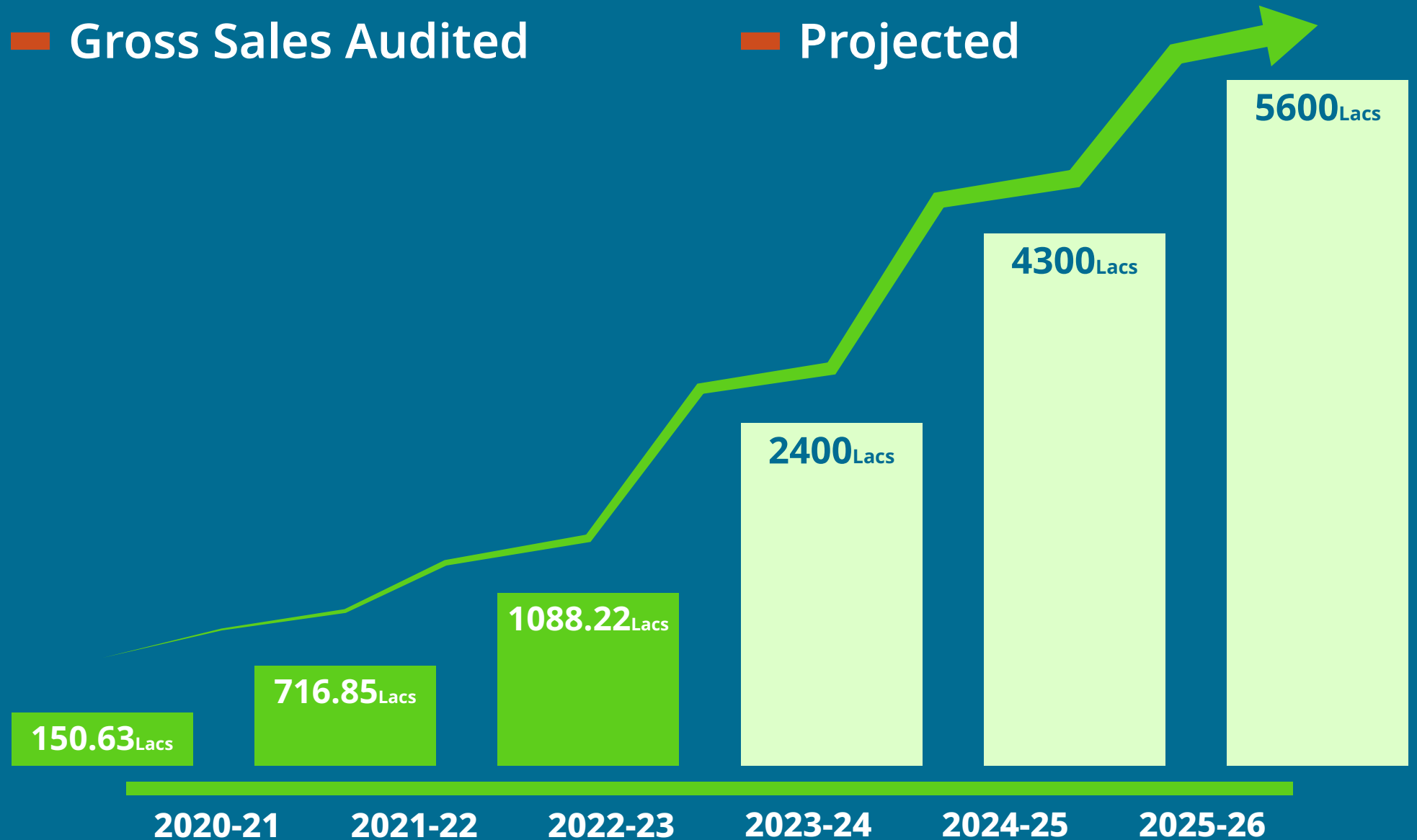
The Factory is about 40 Kms. from Indore, the main Industrial / Business city of Madhya Pradesh. It is well connected by road with Indore. It is attached with modern communication networks all over India.

■ Bank Details

Bnkers Name & Address	:	Canara Bank, Indore
GST Number	:	23AAGFS0060G1ZO
PAN Number	:	AAGFS0060G
Connected Power	:	100 H.P.
Factory LIC Number	:	4745080002446
S.S.I. Number	:	104810761
PF Number	:	MP/IND/019203
ESIC	:	18-15124-66

■ Gross Sales Audited

■ Projected



■ Finance

The Company is self-financed & financially sound and is in a position to generate more finance whenever required for development/expansion.

■ The Company Is Engaged In The

Manufacturing Of

- Scaffolding and accessories and pre cast molds
- Form work
- Shuttering Panels
- Spares for Turbine, Boilers and Valves at TPS.
- Heavy Fabricated Structures As per Customer Drawing.
- Hydraulic Presses
- Hydraulic Press Break
- Scrap Bailing Machine
- Spares For Rolling Mills
- Machinery For Soya Plants
- Manufacturing of Machines as per the requirement of Customer.
- Transmission Line Towers.
- Railway Structures
- Backhoe Buckets for the Loader Machine/ Earthmovers Capacity (0.08 Cu. M. To 0.90 Cu. M).
- Loader Buckets for the Loader Machine/ Earthmovers (Capacity 1.2 Cu. M. To 2.5 Cu. M).
- Bottom Dump Buckets for the Loader Machine/ Earthmovers.
- Condensers

Maintenance of High Pressure Valves, Turbine, Rotors at

- Thermal Power Station
- Nuclear Power Station
- Hydro Power Stations

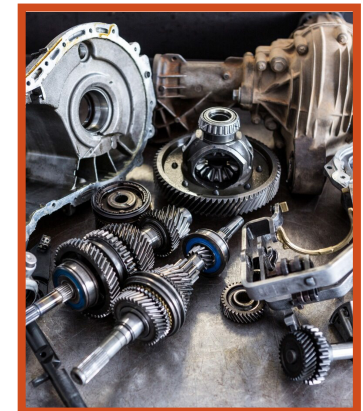
Form Work



Shuttering Panels



Spares for Turbine, Boilers and Valves at TPS.



Manufacturing

Manufacturing



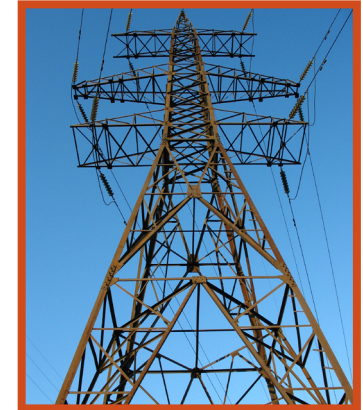
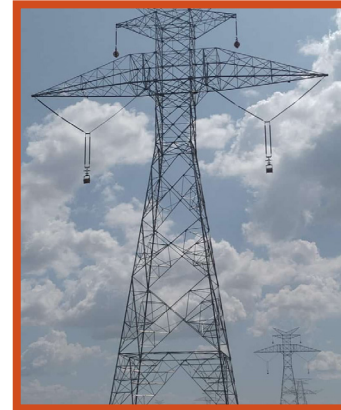
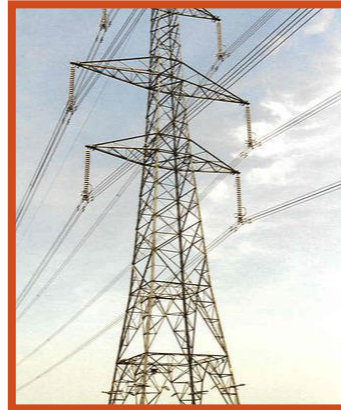
Heavy Fabricated Structures As per Customer Drawing.



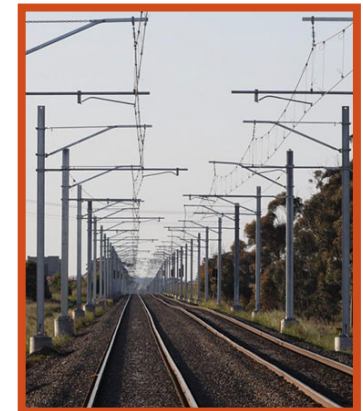
■ Backhoe Buckets



■ Transmission Line Towers.



■ Railway Structures



Manufacturing

Maintenance of High Pressure Valves, Turbine, Rotors at

■ **Thermal Power Station**



■ **Nuclear Power Station**



■ **Hydro Power Stations**



■ Thermal Power Station



Manufacturing
Activity



Fabrication
Activity



Machine
Shop

■ Infrastructure

AREA / SPACE: - The Plot Size is 40,000 Sq. Ft. and the built up area is 2000 Sq. Mtr. (20,000 Sq. Ft.) sufficient space is available for expansion in near future.

■ Area of Factor / Office

Office	1000 Sq. Ft.
Shed Area	35000 Sq. Ft.
Open Space	4000 Sq. Ft.

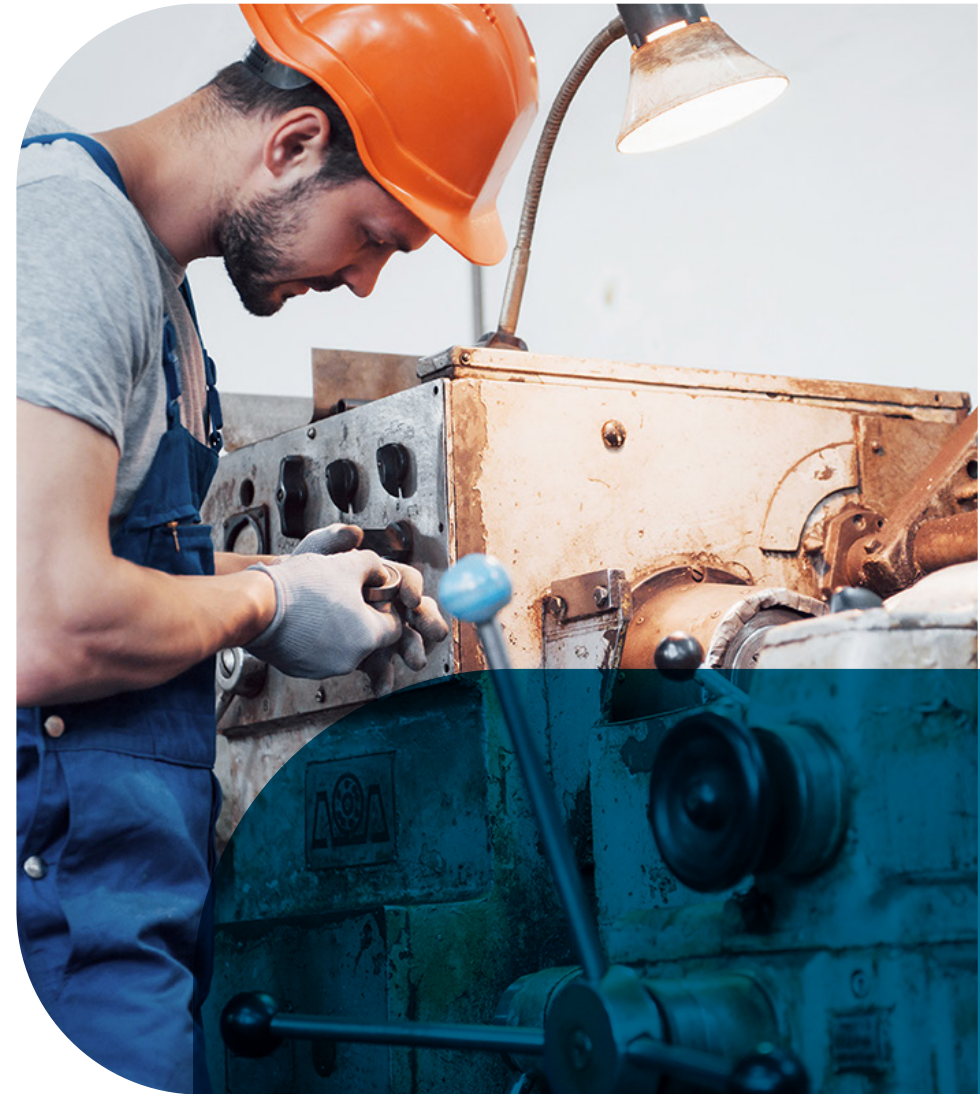


■ **Machines / Equipments**

We have machines and equipment's are available in the company, for the manufacturing, storage & handling of the products. The company is provided with E.O.T crane and good quality machine tools like Lathes, Shapers, Drilling machines etc. Also it is provided with welding equipment's like MIG, TIG welding machine, and D.C. generators, Rectifiers etc. In-Situ machines for doing any type of machining / grinding of turbine Rotor, H.P. Valves Boring / Seat matching grinding etc. Sufficient testing facilities are available in the factory. When required specific facilities can be hired / made available from Pithampur & Indore. Available equipment's & machines are given in Annexure-I.

■ **Materials**

All materials and consumables required for the company are easily available in Indore / Pithampur. As Indore is well connected with Mumbai hence any material / consumable can be made available within 24 hrs.



■ Man Power

Presently the company has 85 staff members & workmen at the Pithampur Unit. They are adequately qualified and experienced (15 years) in their field of activity. They are guided by the Partner who himself is a qualified Mechanical Engineer with over 25 years of Industrial Experience. The entire unit works as a Team, with adequate team spirit, motivated by management. Local people are engaged while doing maintenance work at different sites.

■ Details of Manpower

TECHNICAL

Manager	: 2
Engineers/ Supervisors	: 6
Quality Control	: 2

WORKMEN

Skilled	: 20
Semi Skilled	: 30
Unskilled	: 30



- **Our Project**

- **It's a I&t arc dom for PMO office Delhi**

Work done through L&T
(Building and Factory Development) Delhi



- **Precast Mould for Boundary wall for Navi Mumbai Airport**

Work done through L&T
(Building and Factory Development) Mumbai



Customers

The company has got reputed customers who are satisfied with the services of the company the list of the customers is given below.

List of Customers



ALSTOM Projects India Ltd., BARODA



CROMPTON & GREAVES, MUMBAI.



L & T



L & T ECC (TLT Division), PITHAMPUR.



L & T (WET) Bhopal & U.P



MADHYA PRADESH STATE ELECTRICITY BOARD (M.S.P.E.B.), KORBA, CHACAI



BHARAT HEAVY ELECTRICALS Ltd., BHOPAL, NAGPUR, BARODA.



NUCLEAR POWER COOPERATION, NARORA & AKARPARA (GUJARAT)



KORES INDIA Ltd. (Engineering Division), PITHAMPUR



GUJARAT ELECTRICITY BOARD (G.E.B.), BARODA, GANDHINAGAR, UKAI, DHUVAHARAN.



DAMODAR VALLEY CO. (D.V.C.).



MAHARASHTRA STATE ELECTRICITY BOARD, KORADI.



L & T, B & F Mumbai Delhi



ROHIT STEELS PVT. LTD., BHOPAL.

■ List of Machinery

S. No.	Name of Machinery	Capacity of Machinery	Quantity
01	CNC Profile Cutting Machine	upto 75MM thick	01
02	Horizontal Boring Machine	1m X1mX 1.7m	01
03	Lathe Machine	8ft 2400mm	01
04	Lathe Machine	4ft 1200mm	01
05	Lathe Machine	2ft 600m	01
06	Shaper M/C	600mm	01
07	Central Less Grinding M/C	100mm	01
08	Milling Machine	100mm	01
09	Bend Saw Cutting M/C	100mm	01
10	Radial Drill M/C	35mm	01
11	Radial Drill M/C	62mm	01
12	Radial Drill M/C	45mm	01
13	Radial Drill M/C	70mm	01
14	Plate Shearing Machine	1500x12mm thick	01
15	Roll Bending M/C (Big)	2.5mx12mm thick	01

List of Machinery

S. No.	Name of Machinery	Capacity of Machinery	Quantity
16	Roll Bending M/C	1mx8mm thick	01
17	Hydraulic Press Break	Upto 25mm thk width 1200 mm	01
18	Angle Punching & Cutting M/C	75X75X6 20mm DIA	01
19	Power Press (C)Type	50 Ton	01
20	Power Press (C)Type	75 Ton	01
21	Power Press (C)Type	50 Ton	01
22	Power Press (D)Type	70 Ton	01
23	Hydraulic Bending M/C	250 Ton (Both)	01
24	Hydraulic Bending M/C	400 Ton	01
25	MIG Welding M/C (Nash)	450 Amp.	04
26	MIG Welding M/C	550 Amp.	02
27	ARC Welding M/C	450 Amp.	06
28	EOT Crane	4 M.Ton	01
29	EOT Crane	10 M Ton	01
30	EOT Crane	5 M. Ton	01
31	EOT Crane	7 M. Ton	01